



Direct Sunshine Coast Rail Line

Birtinya station

The Birtinya precinct is a major activity centre with a diverse range of uses and services a wide catchment area. This relatively new precinct features the Sunshine Coast University Hospital, shops, restaurants and office buildings. The Sunshine Coast Stadium is also located within the Birtinya precinct. This stadium is proposed to be a venue for the Brisbane 2032 Olympic and Paralympic Games.

Birtinya station is proposed to be a street level station, creating a seamless connection between the station and Station Road. The station will be built to meet flood immunity requirements and provide direct access to the Birtinya Town Centre precinct. Side platforms are proposed to improve connectivity between the town centre and the platforms and minimise station width.

The main station access point is proposed to be located on Station Road, aligned with The Avenue, a tree-lined boulevard which includes pedestrian links and new feature awning entrance. This will support transfers between rail and the proposed local transit Sunshine Coast Public Transport project, via a high-quality

walkway along The Avenue to a potential interchange on Kawana Way.

The following features are proposed for Birtinya station:

- Accessible station with two tracks, serviced by side platforms. These platforms will be future-proofed to accommodate 9-car trains.
- This station is a street level station, with vertical transport provided to accommodate access between platforms. This access will include stairs and lifts.
- The park 'n' ride location and configuration is currently being investigated. The park 'n' ride proposed at this station is expected to

accommodate lower volumes of users due to its proximity to the Birtinya Town Centre, and medium-higher density catchment.

- Easy pedestrian access to a nearby interchange/station for the proposed Sunshine Coast Public Transport project, connecting the central and coastal public transport corridors.
- Bus interchange bays and kiss 'n' ride (drop off zone).
- Station facilities including ticket office, public toilets, end-of-trip facilities (cycle and scooter storage), CCTV and lighting.



TMR undertook consultation on the Direct Sunshine Coast Rail Line stations in mid-2023. The community were encouraged to provide feedback on the alignment, stations and active transport.

What you told us about Birtinya station

- Park ‘n’ ride is needed
- Accessible design for disability access
- Importance of connection to buses and Sunshine Coast Public Transport project
- Importance of connection to Sunshine Coast University Hospital
- Good active transport connections essential
- Varied feedback about architectural design elements, materials and signage
- Concerns about vegetation loss
- Importance of ample shade and weather protection

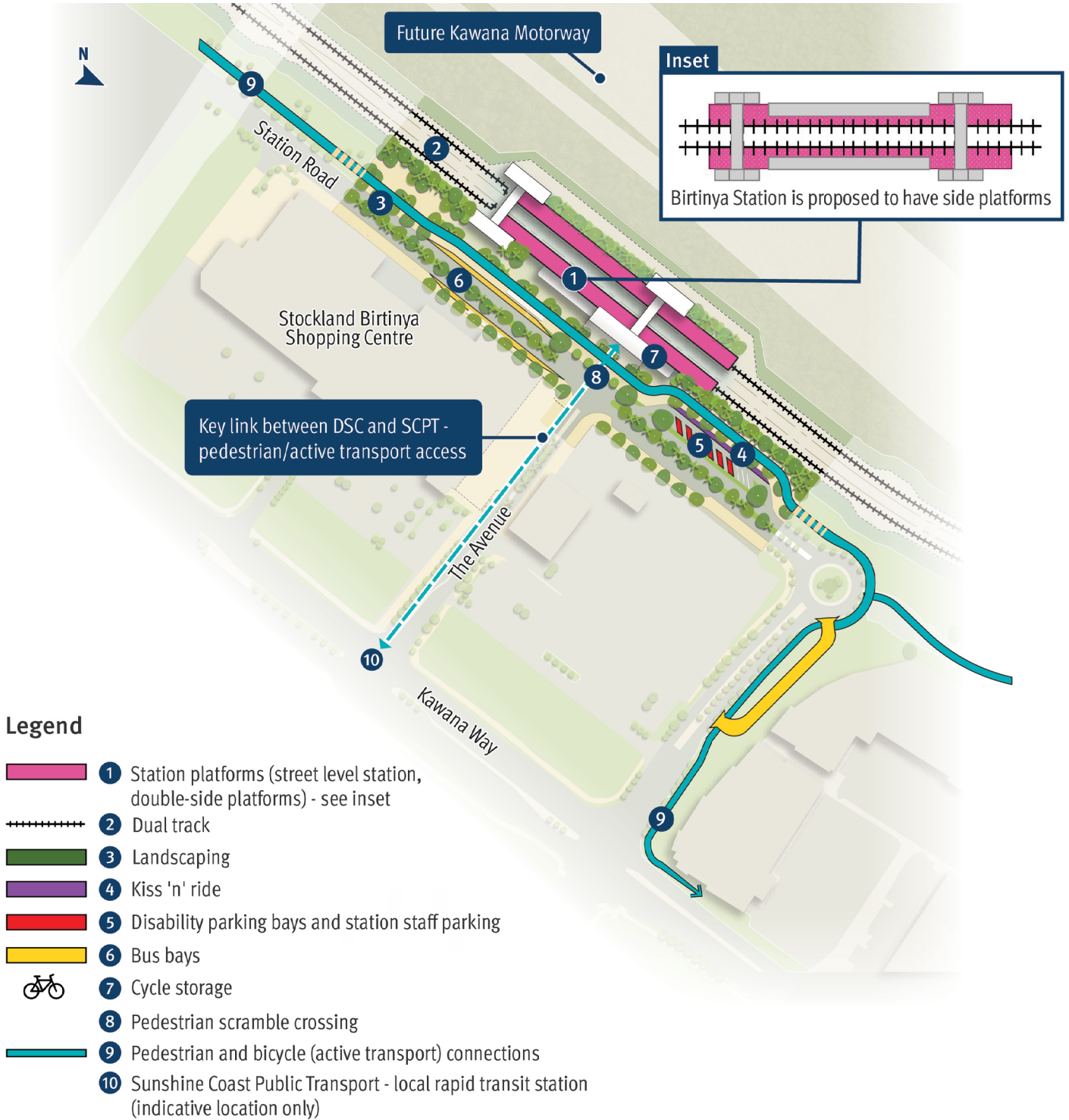
How this is considered in the business case design

- A park ‘n’ ride is proposed to be included for this station. The location and configuration are under investigation. The number of park ‘n’ ride spaces required at this site will be determined by transport modelling which is underway.
- All new and upgraded stations will be accessible for all customers.
- Connecting bus services are a key consideration of planning for the rail project, with modelling and service planning underway. Connections to Sunshine Coast University Hospital and other nearby health services are being planned. Connections to the University of the Sunshine Coast are also under investigation.
- Birtinya station will be a major interchange station for people to connect between the Direct Sunshine Coast Rail Line and the proposed Sunshine Coast Public Transport project, enabling people to travel between the central and coastal corridors via public transport.
- Active transport connections are being planned along the full 37km corridor to ensure people

can walk and ride to stations and to other destinations. Active transport considerations at Birtinya station include access around the station and connection into key north/ south links.

- Environmental investigations are being undertaken for the corridor. The Queensland Government is committed to the protection and sustainability of the Sunshine Coast environment, culture and heritage. The Queensland Government will look for opportunities to minimise and mitigate impacts. Side platforms have been incorporated at this location, with the aim of minimising the station footprint.
- The business case design for stations includes concept designs for platform configuration and the station building. Detailed design, including more specific details about station facilities, will be undertaken in future phases of the project. Community feedback received during the business case phase will be considered in detailed design.

Birtinya station map (updated concept layout)



All double-side platform stations to include lifts and stairs between platforms.
 Birtinya station will enable connection with the proposed Sunshine Coast Public Transport project (mode/vehicle type to be determined).

Birtinya station access and features

Getting to and from stations

In addition to connections with the Sunshine Coast Public Transport project, the Direct Sunshine Coast Rail Line project includes upgrades to the bus network to ensure communities along the route have efficient connections to stations.

In line with the Southern Sunshine Coast Public Transport Strategy, we're planning to introduce new routes between stations, key destinations, and surrounding areas. This will improve travel right across the region.



Scan the QR code to view all DSC Rail Line station concept layouts and a map of proposed corridor refinements.



Accessibility

All stations will be accessible to everyone in our community.



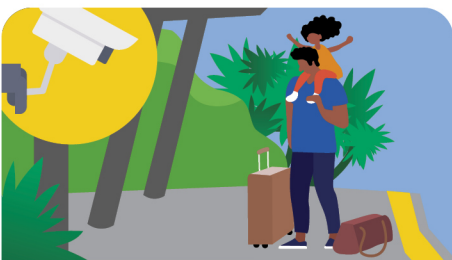
Active transport

To support active transport options, stations will feature facilities and infrastructure to accommodate bikes and other micro-mobility devices.



Passenger comfort

Seating, shelters and nearby water refill points will ensure comfortable journey experiences, with toilets provided at major interchange stations.



Safety

In accordance with Crime Prevention Through Environmental Design (CPTED) principles, stations will include CCTV cameras, lighting and help points.



Ticketing and information

Customer information will be provided via display screens, timetables and hearing loops, with ticketing facilities also included.

Contact us

-  1800 407 533 (8.30am to 4.30pm)
-  scpublictransport@tmr.qld.gov.au
-  Sunshine Coast Public Transport
Department of Transport and Main Roads
PO Box 1600
Maroochydore QLD 4558